

AGENDA
TOWN OF LOCKPORT WORK SESSION
February 7, 2022

1. **Clerk**

2. **Attorney**

Resolution to approve a memorandum of understanding regarding the Deputy Building Inspector position with the Civil Service Employees Association, Inc., Local 1000

3. **Engineer**

Resolution to advertise bids for the Robinson Road Televising and Flushing Sanitary Sewer Assessment (Contract 22-3)

4. **Economic Development Officer**

5. **Highway Superintendent**

6. **Town Board**

Councilmember Dufour –

Resolution to enter into a contract with MidCity Office Equipment, 2495 Main Street, Buffalo, NY for purchase, delivery and assembly of office furniture for the Supervisor's office

7. **Supervisor**

8. **Adjournment**

**MEMORANDUM
OF
UNDERSTANDING**

WHEREAS, the Town of Lockport, 6560 Dysinger Road, Lockport New York, (hereinafter the "Town") and the Civil Service Employees Association, Inc., Local 1000, (hereinafter "CSEA"), entered into a Collective Bargaining Agreement for the time period January 1, 2021 through December 31, 2025 concerning Town of Lockport Unit #7655, and

WHEREAS, due to unique circumstances concerning the search and hiring of the second deputy building inspector, in addition to that job title's unique job duties and qualifications, the Town has identified and is willing to hire a certain individual who has previous experience performing the same job for another New York Municipality, and would offer certain stipulations as to vacation time, which may deviate from the CBA, as set forth below, and

WHEREAS, both the Town and the CSEA desire to allow for said hiring with the following vacation allotments and additional agreements, now therefore

IT IS HEREBY AGREED, BY AND BETWEEN THE PARTIES:

1. That the position of Deputy Building Inspector shall be filled with an individual of the Town's choosing and that said individual will be provided with vacation allotment, in modification of section 3.9.1 of the CBA, as follows:

A. - After six (6) full continuous months of service, based on an employee's anniversary date - five (five) days annually

B. - After one (1) full continuous year of service, based on an employee's anniversary date - ten (10) days annually.

Thereafter, the remainder of the vacation allotment calculations as set forth in section 3.9.1 of the CBA would remain in force.

2. That this agreement is based on unique circumstances concerning this hire and nothing herein shall set a precedent for future situations, constitute an agreement to continue a practice, or constitute a past practice.

3. Nothing in this agreement shall give rise to or confer any right on any CSEA member, and no grievance may be filed by any other CSEA member based on the subject matter of this MOU.

4. That by their signatures below the signatories warrant that all necessary approvals and/or votes have been taken and that the signatories are authorized to bind the respective parties to this agreement.

TOWN OF Lockport

CSEA

By: _____
Mark C. Crocker, Supervisor

By: _____
Authorized Representative

By: _____

By: _____

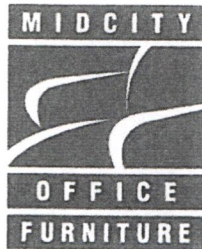
RESOLUTION
ADVERTISE BIDS FOR
ROBINSON ROAD TELEVISIONING & FLUSHING
SANITARY SEWER ASSESSMENT
CONTRACT NO. 22-3

WHEREAS, the Town of Lockport has authorized Wendel, the Town's Engineers to complete contract documents for the Robinson Road Televisioning & Flushing Sanitary Sewer Assessment, and

WHEREAS, Wendel has completed the plans and specifications, and

NOW THEREFORE BE IT RESOLVED, that the Lockport Town Board authorizes the Town Clerk to advertise for said bids as follows:

- Books Available: Thursday, February 10, 2022
- Bid Opening: Tuesday, March 15, 2022 at 10:00 AM.



For a
Better Day
at the **Office™**

Town Of Lockport

NYS CONTRACT- ALLSTEEL- FURNITURE

Date: 2/2/2022

Prepared For: Patricia Dufour

Quote Number: 4817-31098

Valid For 10 Days

Prepared by: Jim Smyth

Confidential

© 2022 MidCity Office Equipment. The information in this transmittal is proprietary to MidCity Office Equipment. It is provided on the condition that it remains in confidence between MidCity Office Equipment and the recipient of this quote. Do Not Copy, Distribute nor Share the Contents of this proposal without the written permission of MidCity Office Equipment.

MidCity Office Equipment
 2495 Main St, Suite 240
 Buffalo, NY 14214
 Phone: (716) 832-0138
 Fax: (716) 832-0892
<http://www.midcityoffice.com>



SUMMARY PAGE

Quote # 4817-31098

Project Scope

Bill To

Town Of Lockport
 Lockport
 6560 Dysinger Road
 Lockport, NY 14094

Install To

Town Of Lockport
 Lockport
 6560 Dysinger Road
 Lockport, NY 14094

Please make out purchase order to:

Mid-City Office Equipment, Inc.
2495 Main Street, Suite 240
Buffalo, NY 14214

Manufacturer: Allsteel, Inc
Reference NYS Contract #PC68279

Project Investment

Project Total	\$12,144.99
Tax (0%)	\$0.00
Grand Total	\$12,144.99

Payment Schedule

100% Due Upon Receipt

Net On Receipt

\$12,144.99

Price Summary by Phase

Option	Phase / TAG	Price	Tax	Total
NYS CONTRACT- ALLSTEEL- FURNITURE	FURNITURE	\$10,469.99	\$0.00	\$10,469.99
	INSIDE DELIVERY	\$1,675.00	\$0.00	\$1,675.00
Grand Total		\$12,144.99	\$0.00	\$12,144.99

MidCity Office Equipment
 2495 Main St, Suite 240
 Buffalo, NY 14214
 Phone: (716) 832-0138
 Fax: (716) 832-0892
 http://www.midcityoffice.com



QUOTATION

4817-31098

VALID UNTIL 2/12/2022

BILL TO

Town Of Lockport
 Lockport
 6560 Dysinger Road
 Lockport, NY 14094

INSTALL TO

Town Of Lockport
 Lockport
 6560 Dysinger Road
 Lockport, NY 14094

Salesperson
 Jim Smyth

Tax ID:
 16-0972688

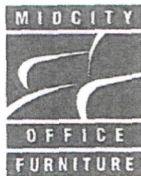
Payment Terms
 Net On Receipt

NYS CONTRACT- ALLSTEEL- FURNITURE

FURNITURE

LINE #	QTY	UNIT	PART # / DESCRIPTION	PRICE EA	EXT PRICE
1	2.00	EA	P13524TP / Optimize Tckble Pnl 35H x 24W w/out Top Cap	\$121.39	\$242.78
			OPTIONS		
			\$(A) Grd A Fab (Fabric Grd Opts)		
			.TP9 Fab: Tempest (GRD A FAB)		
			80 Clr: Full Stream (Tempest FAB Clr opt)		
			\$(P1) P1 Paint Opts (Pnt Grd Opts)		
			.P28 Fossil (Core Clr Opts)		
2	2.00	EA	P13536TP / Optimize Tckble Pnl 35H x 36W w/out Top Cap	\$147.01	\$294.02
			OPTIONS		
			\$(A) Grd A Fab (Fabric Grd Opts)		
			.TP9 Fab: Tempest (GRD A FAB)		
			80 Clr: Full Stream (Tempest FAB Clr opt)		
			\$(P1) P1 Paint Opts (Pnt Grd Opts)		
			.P28 Fossil (Core Clr Opts)		
3	2.00	EA	P13548TP / Optimize Tckble Pnl 35H x 48W w/out Top Cap	\$162.26	\$324.52
			OPTIONS		
			\$(A) Grd A Fab (Fabric Grd Opts)		
			.TP9 Fab: Tempest (GRD A FAB)		
			80 Clr: Full Stream (Tempest FAB Clr opt)		
			\$(P1) P1 Paint Opts (Pnt Grd Opts)		
			.P28 Fossil (Core Clr Opts)		
4	2.00	EA	P1TC24 / Panel Top Cap 24"W	\$9.76	\$19.52
			OPTIONS		
			\$(P1) P1 Paint Opts (APTK Pnt Grd Opts)		
			.P28 Fossil (Core Clr Opts)		
5	2.00	EA	P1TC36 / Panel Top Cap 36"W	\$10.37	\$20.74
			OPTIONS		
			\$(P1) P1 Paint Opts (APTK Pnt Grd Opts)		
			.P28 Fossil (Core Clr Opts)		
6	2.00	EA	P1TC48 / Panel Top Cap 48"W	\$12.81	\$25.62
			OPTIONS		
			\$(P1) P1 Paint Opts (APTK Pnt Grd Opts)		
			.P28 Fossil (Core Clr Opts)		

MidCity Office Equipment
 2495 Main St, Suite 240
 Buffalo, NY 14214
 Phone: (716) 832-0138
 Fax: (716) 832-0892
<http://www.midcityoffice.com>



QUOTATION

4817-31098

VALID UNTIL 2/12/2022

NYS CONTRACT- ALLSTEEL- FURNITURE

FURNITURE						PRICE EA	EXT PRICE
LINE #	QTY	UNIT	PART # / DESCRIPTION				
7	4.00	EA	P335PV / Optimize Panel End Covers 35H			\$25.93	\$103.72
			OPTIONS				
			\$(P1)	P1 Paint Opts (Pnt Grd Opts)			
			.P28	Fossil (Core Clr Opts)			
8	2.00	EA	P3CONL35N / 35H "L" Connector Post			\$32.94	\$65.88
			OPTIONS				
			\$(P1)	P1 Paint Opts (Select Paint Color)			
			.P28	Fossil (Core Clr Opts)			
9	2.00	EA	P3CONSL / "L" Connector Strap			\$5.49	\$10.98
10	2.00	EA	P3CONTT / Optimize Inline Connector Kit			\$25.01	\$50.02
11	2.00	EA	T52448S / Primary 24Dx48W Flat Eg Lam w/Grommets			\$146.71	\$293.41
			OPTIONS				
			\$(L1WDGR)	L1 Woodgrain Lam Opts (Laminate Grd Opt)			
			.LFW1	Lam: Florence Walnut (Woodgrain LAM Clr opts)			
			.FW	Edg: Florence Walnut (Edge opt)			
			.P	Plastic Grommet (Grommet Type Option)			
12	1.00	EA	T52454S / Primary 24Dx54W Flat Eg Lam w/Grommets			\$158.30	\$158.30
			OPTIONS				
			\$(L1WDGR)	L1 Woodgrain Lam Opts (Laminate Grd Opt)			
			.LFW1	Lam: Florence Walnut (Woodgrain LAM Clr opts)			
			.FW	Edg: Florence Walnut (Edge opt)			
			.P	Plastic Grommet (Grommet Type Option)			
13	1.00	EA	T52460S / Primary 24Dx60W Flat Eg Lam w/Grommets			\$179.95	\$179.95
			OPTIONS				
			\$(L1WDGR)	L1 Woodgrain Lam Opts (Laminate Grd Opt)			
			.LFW1	Lam: Florence Walnut (Woodgrain LAM Clr opts)			
			.FW	Edg: Florence Walnut (Edge opt)			
			.P	Plastic Grommet (Grommet Type Option)			
14	1.00	EA	T52484S / Primary 24Dx84W Flat Eg Lam w/Grommets			\$277.55	\$277.55
			OPTIONS				
			\$(L1WDGR)	L1 Woodgrain Lam Opts (Laminate Grd Opt)			
			.LFW1	Lam: Florence Walnut (Woodgrain LAM Clr opts)			
			.FW	Edg: Florence Walnut (Edge opt)			
			.P	Plastic Grommet (Grommet Type Option)			
15	1.00	EA	T52496S / Primary 24Dx96W Flat Eg Lam w/Grommets			\$343.13	\$343.13
			OPTIONS				
			\$(L1WDGR)	L1 Woodgrain Lam Opts (Laminate Grd Opt)			
			.LFW1	Lam: Florence Walnut (Woodgrain LAM Clr opts)			
			.FW	Edg: Florence Walnut (Edge opt)			
			.P	Plastic Grommet (Grommet Type Option)			

MidCity Office Equipment
 2495 Main St, Suite 240
 Buffalo, NY 14214
 Phone: (716) 832-0138
 Fax: (716) 832-0892
 http://www.midcityoffice.com



QUOTATION

4817-31098

VALID UNTIL 2/12/2022

NYS CONTRACT- ALLSTEEL- FURNITURE

FURNITURE					PRICE EA	EXT PRICE
LINE #	QTY	UNIT	PART # / DESCRIPTION			
16	2.00	EA	T530725 / Primary 30Dx72W Flat Eg Lam w/Grommets		\$230.88	\$461.77
			OPTIONS			
			\$(L1WDGR) L1 Woodgrain Lam Opts (Laminate Grd Opt)			
			.LFW1 Lam: Florence Walnut (Woodgrain LAM Clr opts)			
			.FW Edg: Florence Walnut (Edge opt)			
			.P Plastic Grommet (Grommet Type Option)			
17	1.00	EA	ISLAUTNPB601852 / Stor Isla Top 60Wx18D S2		\$122.40	\$122.40
			OPTIONS			
			.X Non-Fsc Wood (FSC Wood Opt)			
			\$(L1WDGR) L1 Woodgrain Lam Opts (Lam Grd Opts)			
			.LFW1 Lam: Florence Walnut (Woodgrain LAM Clr opts)			
			.FW Edg: Florence Walnut (Edge opt)			
18	4.00	EA	CDG / Gussets (1 Pr)		\$44.23	\$176.90
			OPTIONS			
			\$(P1) P1 Paint Opts (Pnt Grd Opts)			
			.P28 Fossil (Core Clr Opts)			
19	4.00	EA	CEP2429F / Freestanding 24DX29-1/2H End Pnl Sup		\$68.02	\$272.06
			OPTIONS			
			\$(P1) P1 Paint Opts (Pnt Grd Opts)			
			.P28 Fossil (Core Clr Opts)			
20	4.00	EA	CSL2429F / Freestanding 24Dx29-1/2H Sup Leg		\$58.87	\$235.46
			OPTIONS			
			\$(P1) P1 Paint Opts (Pnt Grd Opts)			
			.P28 Fossil (Core Clr Opts)			
21	2.00	EA	AYBHEP3029 / Align Adept Style 30Dx29H H-Leg Sup		\$80.22	\$160.43
			OPTIONS			
			\$(P1) P1 Paint Opts (Pnt Grd Opts)			
			.P28 Fossil (Core Clr Opts)			
22	1.00	EA	Z5SC48 / 36W External Supt Channel for 48W W/S		\$20.13	\$20.13
23	2.00	EA	Z5SC60 / 48W External Supt Channel for 60W W/S		\$25.01	\$50.02
24	1.00	EA	T612FB / Flat Bkt for 12D W/S		\$15.86	\$15.86
25	1.00	EA	OH1530FD / 15H x30W Flipper Door Overhead-No Pull		\$244.31	\$244.31
			OPTIONS			
			.YZ Sys:Stride-Dna-Optimize (System Selection)			
			\$(P1) P1 Paint Opts (Pnt Grd Opts)			
			.P28 Fossil (Core Clr Opts)			
			.STD Standard Random Key (Lock/omt opts)			

MidCity Office Equipment
 2495 Main St, Suite 240
 Buffalo, NY 14214
 Phone: (716) 832-0138
 Fax: (716) 832-0892
<http://www.midcityoffice.com>



QUOTATION

4817-31098

VALID UNTIL 2/12/2022

NYS CONTRACT- ALLSTEEL- FURNITURE

FURNITURE					
LINE #	QTY	UNIT	PART # / DESCRIPTION	PRICE EA	EXT PRICE
26	1.00	EA	OH1542FD / 15H x42W Flipper Door Overhead-No Pull OPTIONS .YZ Sys:Stride-Dna-Optimize (System Selection) \$(P1) P1 Paint Opts (Pnt Grd Opts) .P28 Fossil (Core Clr Opts) .STD Standard Random Key (Lock/omt opts)	\$267.79	\$267.79
27	2.00	EA	UH6560FD / Universal 60"W Hutch Square Flipper Door No Pull OPTIONS \$(P1) P1 Paint Opts (Paint Options) .P28 Fossil (Core Clr Opts) .STD Standard Random Key (Lock Type opt w/ 2 Locks)	\$422.12	\$844.24
28	2.00	EA	UHTB60 / Universal 60 Tackboard for Universal 60W Hutch OPTIONS \$(P1) P1 Paint Opts (Paint Options) .P28 Fossil (Core Clr Opts) \$(A) Grd A Fabric (Select Fabric) .TP Tempest (Grade A Fabric) 980 Clr: Full Stream (Tempest Fabric)	\$158.60	\$317.20
29	2.00	EA	ELF830NI / Ess Lat 30W 28H 2-12" Drws Int Pull OPTIONS \$(P1) P1 Paint Opts (ELF830NA Pnt Grd Opts) .P28 Fossil (Core Clr Opts) .STD Standard Random Key (Lock/omt opts)	\$425.52	\$851.04
30	1.00	EA	ELF842NI / Ess Lat 42W 28H 2-12" Drws Int Pull OPTIONS \$(P1) P1 Paint Opts (ELF842NA Pnt Grd Opts) .P28 Fossil (Core Clr Opts) .STD Standard Random Key (Lock/omt opts)	\$545.76	\$545.76
31	3.00	EA	ESC230I / Essentials 28Hx30W Storage Cabinet Integral Pull OPTIONS \$(P1) P1 Paint Opts (Pnt Grd Opts) .P28 Fossil (Core Clr Opts) .STD Standard Random Key (Lock/omt opts)	\$369.72	\$1,109.16
32	2.00	EA	PF197-233I / Essentials Support Ped BBF 28Hx22-7/8Dx15W Integral Pull OPTIONS \$(P1) P1 Paint Opts (PF197-233A Pnt Grd Opts) .P28 Fossil (Core Clr Opts) .STD Standard Random Key (Lock/omt opts)	\$302.56	\$605.12
33	1.00	EA	PF198-182I / Essentials Support Ped FF 28Hx18Dx15W Integral Pull OPTIONS \$(P1) P1 Paint Opts (PF198-232A Pnt Grd Opts) .P28 Fossil (Core Clr Opts) .STD Standard Random Key (Lock/omt opts)	\$288.53	\$288.53

MidCity Office Equipment
 2495 Main St, Suite 240
 Buffalo, NY 14214
 Phone: (716) 832-0138
 Fax: (716) 832-0892
<http://www.midcityoffice.com>



QUOTATION

4817-31098

VALID UNTIL 2/12/2022

NYS CONTRACT- ALLSTEEL- FURNITURE

FURNITURE

LINE #	QTY	UNIT	PART # / DESCRIPTION	PRICE EA	EXT PRICE
34	1.00	EA	TKG41530T / Ter Tackable Acoustic Tile 15H x 30W OPTIONS \$(A) Grd A Fab (FAB Gr opts) .TP9 Fab: Tempest (GRD A FAB) 80 Clr: Full Stream (Tempest FAB Clr opt)	\$28.67	\$28.67
35	1.00	EA	TKG41542T / Ter Tackable Acoustic Tile 15H x 42W OPTIONS \$(A) Grd A Fab (FAB Gr opts) .TP9 Fab: Tempest (GRD A FAB) 80 Clr: Full Stream (Tempest FAB Clr opt)	\$33.25	\$33.25
36	1.00	EA	TK365YEB / Ter Wall Track Kit 65H-Pair of Ends OPTIONS \$(P1) P1 Paint Opts (Pnt Grd Opts) .P28 Fossil (Core Clr Opts)	\$80.52	\$80.52
37	1.00	EA	TK365YM / Wall Track Kit-Middle Unit OPTIONS \$(P1) P1 Paint Opts (Pnt Grd Opts) .P28 Fossil (Core Clr Opts)	\$42.09	\$42.09
38	1.00	EA	Y330YS / 30W Wall Track Tile Attachment Kit	\$61.31	\$61.31
39	1.00	EA	Y342YS / 42W Wall Track Tile Attachment Kit	\$74.73	\$74.73
40	2.00	EA	AMASHD / Dynamic Single Monitor - Heavy Weight OPTIONS .SVR Silver Generic (Select Paint Color)	\$278.55	\$557.10
41	2.00	EA	ACD1 / Polymer Center Drawer	\$81.90	\$163.80
42	2.00	EA	AKTMID / Articulating Keyboard Tray with 21" Track	\$215.10	\$430.20

INSIDE DELIVERY

LINE #	QTY	UNIT	PART # / DESCRIPTION	PRICE EA	EXT PRICE
43	1.00	EA	Inside Delivery / INSIDE DELIVERY PER NYS CONTRACT	\$1,675.00	\$1,675.00

MidCity Office Equipment
2495 Main St, Suite 240
Buffalo, NY 14214
Phone: (716) 832-0138
Fax: (716) 832-0892
<http://www.midcityoffice.com>



QUOTATION

4817-31098

VALID UNTIL 2/12/2022

NYS CONTRACT- ALLSTEEL- FURNITURE

CUSTOMER SIGN OFF

subtotal	\$12,144.99
sales tax	\$0.00
total	\$12,144.99

Authorized Signature

Accepted Date

Print Name

MidCity Office Equipment
2495 Main St, Suite 240
Buffalo, NY 14214
Phone: (716) 832-0138
Fax: (716) 832-0892
<http://www.midcityoffice.com>



QUOTATION

4817-31098

VALID UNTIL 2/12/2022

TERMS AND CONDITIONS

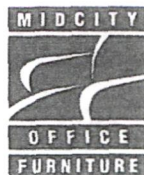
1. Unless otherwise quoted, Mid-City Office Equipment, Inc. will deliver, assemble, arrange quoted furniture per drawing, and remove all packaging and debris from site.
2. Reconfigures to approved drawings may incur additional charges.
3. Installations outside normal business hours, weekends, and holidays will incur additional charges unless included in the quote.
4. Mid-City does not move, connect or disconnect power feed to building wiring.
5. Mid-City does not move computer equipment.
6. Elevator access is assumed. Stair carry and building restrictions may incur additional charges if not included in the quote.
7. Installation areas should be cleared prior to Mid-City's arrival.
8. Clearing of waiting for areas to be cleared may incur additional charges if not included in the quote.
9. Additional services, and moving of items not quoted, may incur additional charges.
10. Return trips for additional services must be scheduled with Customer Service.
11. Returned items will be subject to a 50% restocking charge.
12. Union or Prevailing wage rates must be quoted separately.
13. Please contact your salesperson for additional quoted services.

To accept the following estimate, drawings, specifications and delivery and installation conditions please sign both below and the last page of the estimate. If a purchase order is required for payment, that order number must be provided at the time of order placement. Your signature approves Midcity Office Furniture Terms and Conditions stated above.

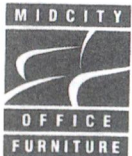
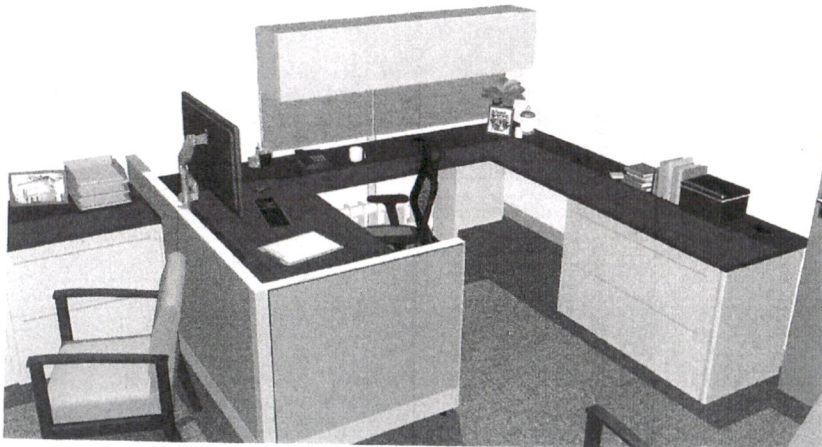
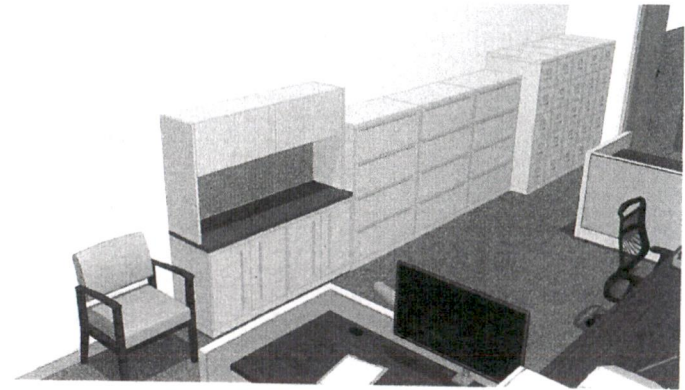
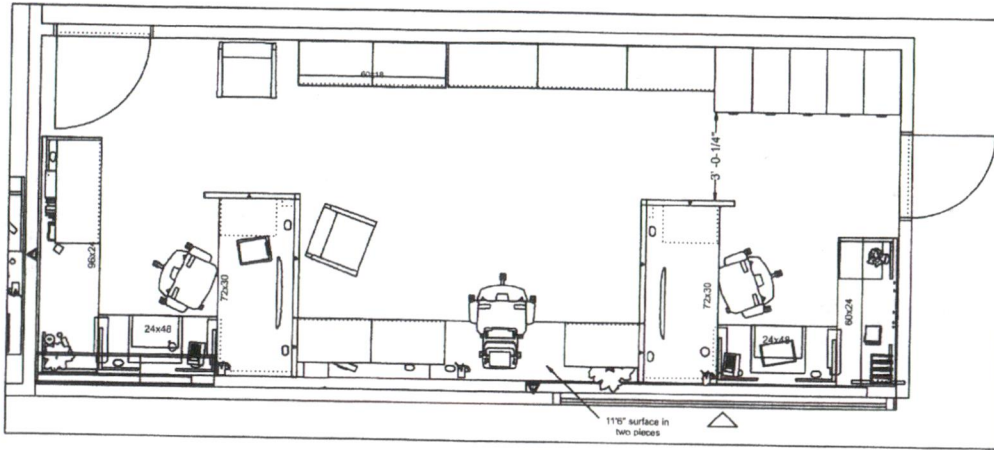
Authorized Signature _____ Date _____

Title _____ PO No. _____

Company _____



For a
Better Day
at the Office™



For a
Better Day
at the Office™

2495 MAIN STREET, SUITE 240
BUFFALO, NY 14214

TOWN OF LOCKPORT FINANCE DEPARTMENT

THIS DRAWING AND ITS REPRODUCTIONS ARE THE PROPERTY OF MIDCITY OFFICE FURNITURE AND MAY NOT BE REPRODUCED, PUBLISHED OR USED IN ANYWAY WITHOUT THE WRITTEN PERMISSION OF MIDCITY OFFICE FURNITURE.

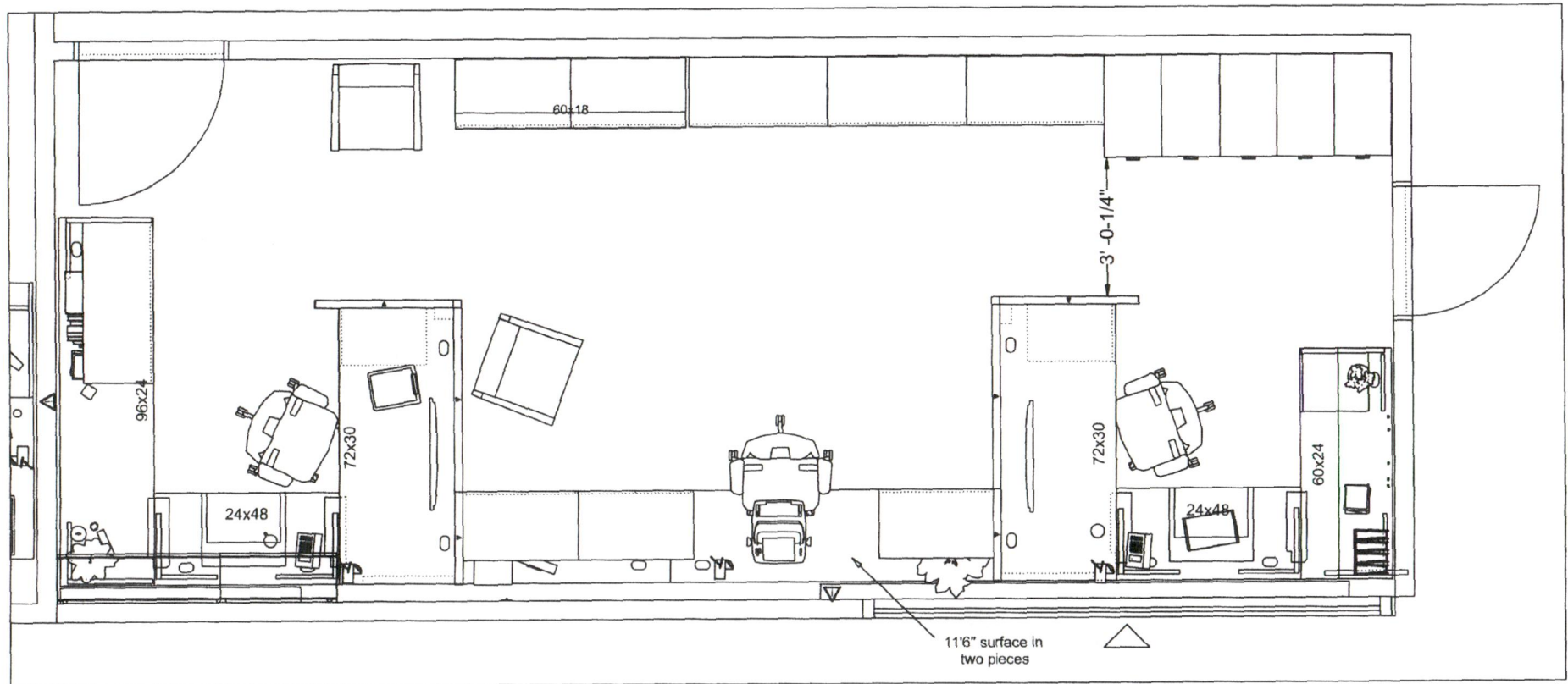
DATE: 1.24.22

DESIGNER: SB

SALES REP: JS

PROJ. #: 4817

A-1



For a
Better Day
at the **Office**

2495 MAIN STREET, SUITE 240
BUFFALO, NY 14214

TOWN OF LOCKPORT FINANCE DEPARTMENT

THIS DRAWING AND ITS REPRODUCTIONS ARE THE PROPERTY OF MIDCITY OFFICE FURNITURE AND MAY NOT BE REPRODUCED, PUBLISHED OR USED IN ANYWAY WITHOUT THE WRITTEN PERMISSION OF MIDCITY OFFICE FURNITURE.

DATE: 1.24.22

DESIGNER: SB

SALES REP: JS

PROJ. #: 4817

A-1